

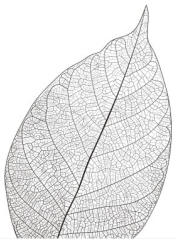
BONOKUNTOLA

touch of exquisite comfort

www.cubeholdingsltd.com



atmosphere of **Comfort & Luxury**



BONOKUNTOLA



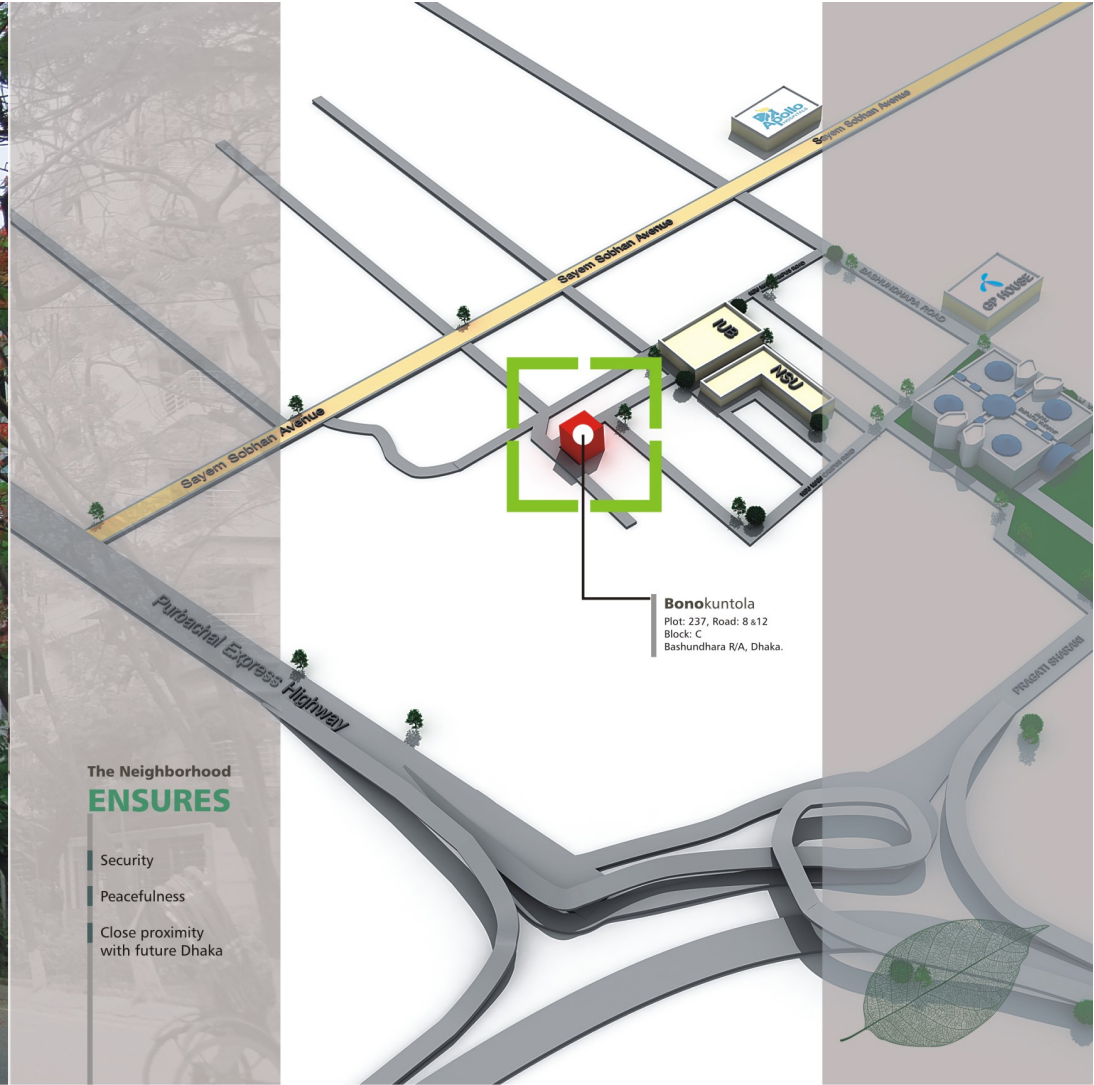


the living roof
refresh & rejuvenate



BASHUNDHARA

THE LOCATION





key facts

The Project
Bonokuntola

Location
Plot No: 237, Road No: 08 & 12
Block: C, Bashundhara R/A

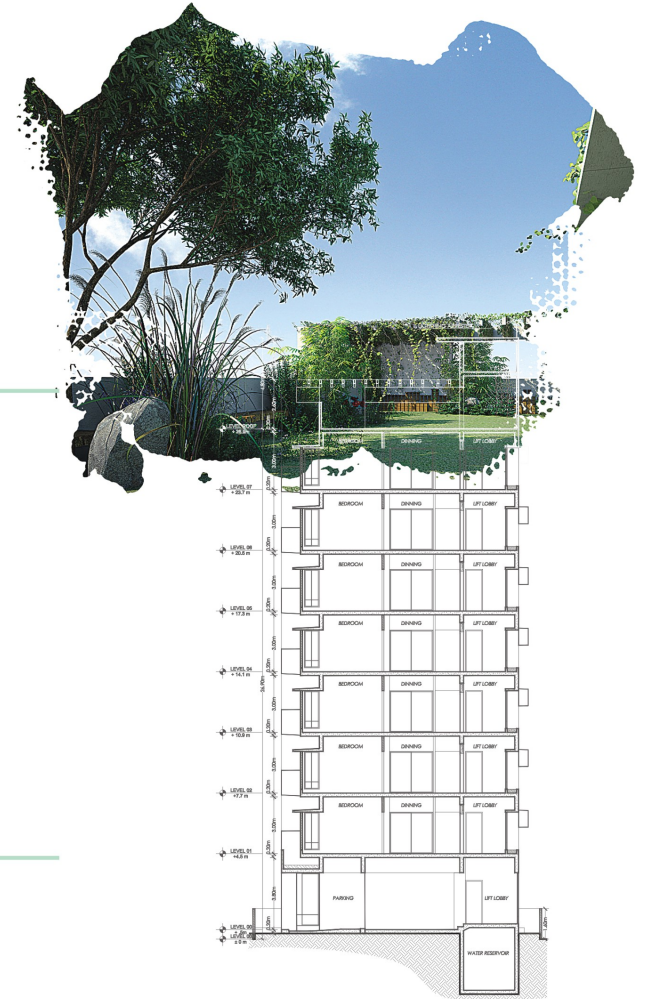
Building Height:
8 Storied (G+7)

Apartment Size
2310 sft (Approx.)

Land Area
5 Katha

Architect
Sheikh Ahsan ullah Mojumder

Approval
রাজউক/পরিজোন-৪/১ তসি ৪৭২/১৫/১১ স্থা





PARKING

General Disclaimer:
The information contained in this Brochure and Plans are subject to change as may be required by the authority or the project architect. All measurements are approximate. All illustrations are artist's impression only.



The image features a central 3D axonometric rendering of a modern residential building. The building is composed of several interconnected units, each with its own living space, including bedrooms, living areas, and dining rooms. The units are separated by glass railings and have a mix of brick and white wall finishes. The building is set against a background of architectural blueprints and a pencil. The blueprints show various floor plans and structural details, with some handwritten notes in Cyrillic script. A pencil is positioned diagonally across the bottom left of the image. The overall aesthetic is clean and professional, emphasizing architectural design and luxury.

Axonometric VIEW

Uncovered story of Luxury and Relaxation

4 Bedrooms

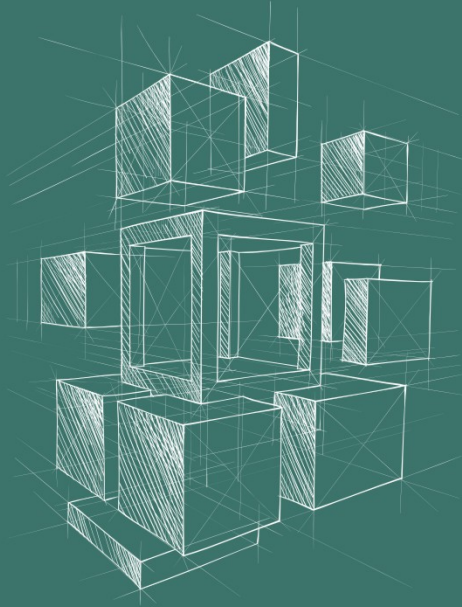


R o a d

Special Amenities

- North-East Corner Plot
- Fair Face Concrete & Face Brick Building
- Daylight Optimization
- Free Flowing Air Circulation
- Green Landscaping on Roof





Apartment Size

2310 sft. (Approx.)

UNIT PLAN

Features & Amenities



DOORS

Decorative solid wooden main entrance door (Chittagong Teak/Equivalent) with door chain, check viewer, calling bell and good quality lock. Internal doors of Teak-chamble veneer flush doors with French polish. All doors frames will be made of Teak chamble.

WINDOWS

4" Aluminum section Sliding windows as per Architectural design. 5 mm thick clear glass with mohair lining and rain water barrier in aluminum section. Safety window grill of M.S. square bar.

FLOORS

Imported mirror polish (24" x 24") tiles in all rooms. Verandah with imported tiles (24" x 24").

WALLS

All exterior walls (except bathroom) are 8"-10" thick. All interior walls are 5" thick. 1st class brick work with smooth plastering. Roof top parapet wall.

PAINT & POLISH

The exterior surface of the building will be painted with weatherproof paint (Berger/ Elite/ Asian) of elegant colors (As per design). The interior surface will be painted with plastic paint (white/off white color). All doors will be French polished. Grills will be painted with synthetic enamel paint.

BATHROOMS

Cabinet basin with marble top in Master Bath. Cotto/RAK sanitary wares. RAK/China Ceramic Tiles in walls up to false ceiling. RAK/China Homogeneous/Ceramic Tiles on floor. Good quality local C.P (Chrome Plate) fittings. Bathtub in Master Bath. Concealed Hot & Cold water lines in Master Bath. Overhead storage spaces above toilets. RAK Tiles on floor and wall in Maid's bath with Long Pan, Lowdown and Shower. Exhaust Fan in all Bathrooms.

KITCHEN

Impressively designed Granite work top. Double Burner Gas Outlet. RAK/ Equivalent Wall & Floor Tiles. One Stainless Steel Sink with Mixer. Suitably Located Exhaust Fan. Concealed Hot & Cold water lines.

ELECTRICAL

Provision for air conditioning in 4 Bedrooms & Living Room. A washing machine provision in verandah. MK/Seimens/equivalent electrical switches & plug points. Electrical distribution box with main switch. Best quality (BRB/Supersign/Paradise) wiring in each apartment. Electrical point for ironing. TV cables in Master bedroom, Bed-2 and Family Living. One Internet connection point in suitable location

GENERATOR

Deutz/ Perkins (UK) with auto change over switch. Enough capacity to cover lift, common lights, pumps and all lights & fan points with canopy in each apartment as per CHL standard (Except AC).

LIFT

One 8 passenger capacity ThyssenKrupp/ Mitsubishi/Hyundai/ equivalent Brand Lift. Fan, Emergency Alarm & Voltage Stabilizer (All are Foreign manufactured).

INTERCOM

Panasonic or equivalent brand intercom to connect each apartment to the reception desk.

WATER PUMPS

Two units of Pedrollo water pumps (including one standby).

FIRE SAFETY

There will be one universal type of fire Extinguisher in the lobby of each floor.

METERS

Individual electric meter with circuit breakers are secured in a flush-metal panel box for each apartment. Common electric meter.

ROOF TOP

One cloth drying stand for each unit. Damp/water proof & heat proof course will be implemented as per design. Designed 4" concrete parapet wall. Sufficient water outlet with uniform slope. BBQ Corner and Service Counter. Toilet and Kitchen with Gas Connection. Electric points & Fan Points. Roof Top Garden.

GROUND FLOOR

Reserved car parking for residents with comfortable driveways. Electric Sub-Station, Generator & Guardroom. Reception Lobby & Personal mailboxes. Underground water reservoir of required size. Secured gate as per design. Drivers' waiting, Caretaker room, Guardroom, Toilet & Kitchen. Water body & huge greenery around the building



All items mentioned in the above Specifications are based on CHL standard. In case of non-availability of the materials mentioned in this specifications, equivalent materials in terms of quality and price available in the market will be used and CHL reserves the sole discretion to determine the standard of fittings and fixtures. Any requirement/choice beyond the CHL standard items will be considered as Optional Requirement of the buyers.