

খবগপ্রিবগ
বসুন্ধরায়



Cube Holdings Limited
Floor- 1B, House- 05, Road- 04
DOHS Banani, Dhaka- 1206
Phone: 01841 616106-07



A large, textured tree trunk stands on the left side of the frame. To the right, a swing set is visible, consisting of a rope hanging from a branch above and a dark, rectangular seat. The ground is covered in dry, brown grass and leaves. The background is a bright, hazy landscape with a distant horizon line. The overall color palette is warm and muted, with shades of brown, tan, and cream.

হেথা নয় হোথা নয়
অন্য কোনখানে



প্রথম স্তর AT A GLANCE

The Project
Ekantika

Location
Plot No: 184, Road No: 08
Block: C, Bashundhara R/A

Building Height:
9 Storied (G+8)

No. of Apartment
8 nos

Apartment Size
2025 sft (Aprox.)

Open Space
40% (Minimum)

Developer :
Cube Holdings Ltd.
Enlisted RAJUK
Member REHAB

Land Area
5 Katha

Architect
Tanvir Mahmud

Approval
স্মারক নং: ২৫.৩৯.০০০০.১০৬.৩৩.১০৫৪/১৭/১০ স্থা.





300' Purbachal highway

শ্রবণ শ্রীবাস

Location
Plot No: 184
Road No: 08
Block: C
Bashundhara R/A

Road No: 06

Road No: 07

Road No: 08

Sayem Sobhan Anvir road - towards 300' Purbachal highway

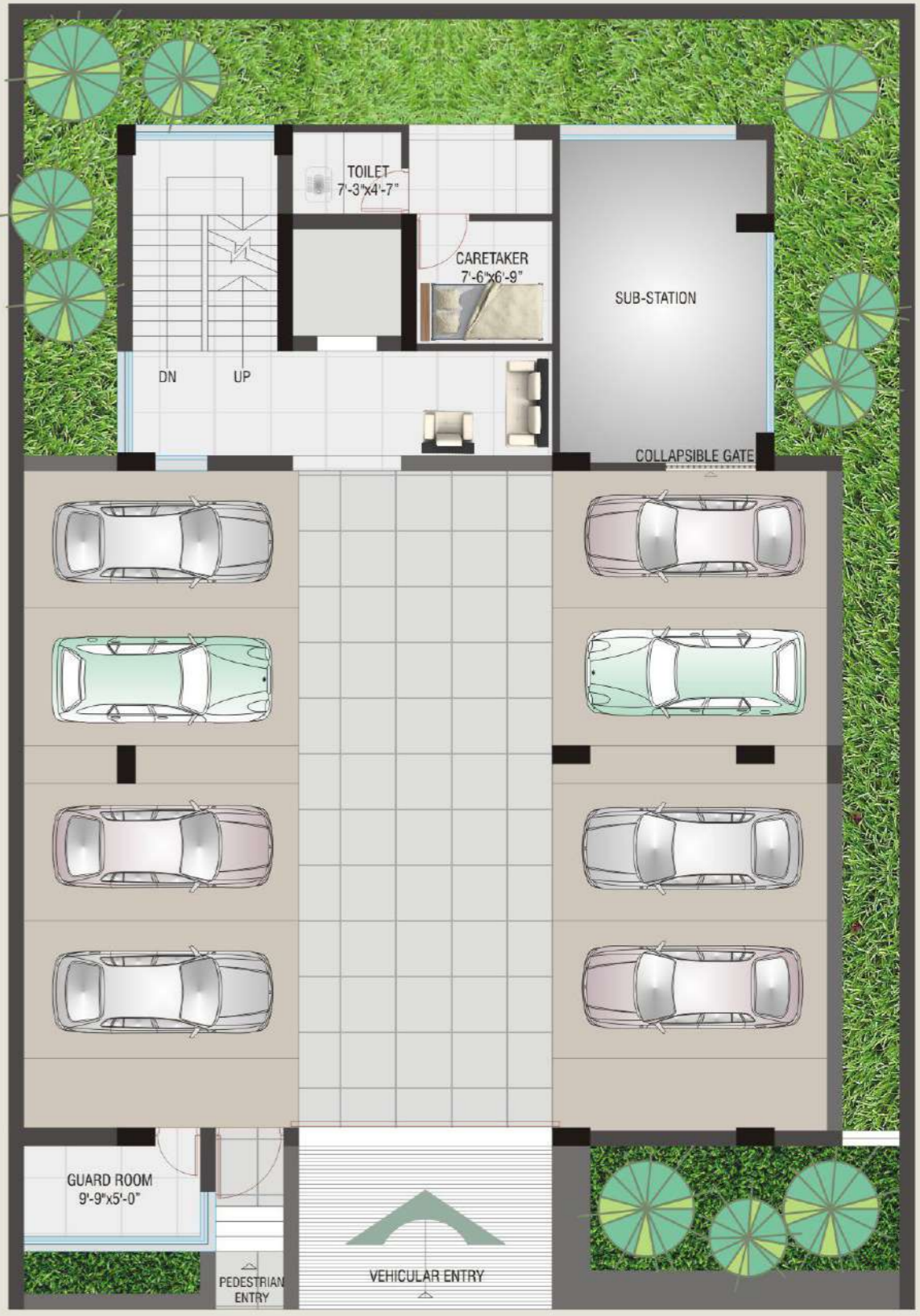


LOCATION MAP





GROUND FLOOR PLAN



শ্রীমতী

GROUND

FLOOR PLAN



2025 sft
Open Terrace
300 sft
1st
FLOOR PLAN

FIRST FLOOR PLAN

AXONOMETRIC
VIEW



TYPICAL FLOOR PLAN



2025 sft
UNIT PLAN

FLOOR PLAN



ROOF PLAN



ROOF PLAN



FEATURES & AMENITIES



DOORS

Decorative solid wooden main entrance door (Chittagong Teak/Equivalent) with door chain, check viewer, calling bell and good quality lock. Internal doors of Teak-chamble veneer flush doors with French polish. All doors frames will be made of Teak chamble.

WINDOWS

4" Aluminum section sliding windows as per Architectural design.
5 mm thick clear glass with mohair lining and rain water barrier in aluminum section.
Safety window grill of M.S. square bar.

FLOOR

Imported mirror polish (24" x 24") tiles in all rooms & verandah.

WALLS

All exterior walls (except bathroom) are 5"-10" thick.
All interior walls are 5" thick.
1st class brick work with smooth plastering.
Roof top parapet wall.

PAINT & POLISH

The exterior surface of the building will be painted with weatherproof paint (Berger/ Elite/ Asian) of elegant colors (As per design).
The interior surface will be painted with plastic paint (white/off white color).
All doors will be French polished.
Grills will be painted with synthetic enamel paint.

BATHROOMS

Cabinet basin with marble top in Master Bath.
Imported/RAK sanitary wares.
Imported/RAK Ceramic Tiles in walls up to false ceiling.
Imported/RAK Homogeneous/Ceramic Tiles on floor.
Good quality local C.P (Chrome Plate) fittings.
Concealed Hot & Cold water lines in Master Bath.
Overhead storage spaces above toilets.
RAK Tiles on floor and wall in Maid's bath with Lowdown and Shower at servant toilet.

KITCHEN

Impressively designed Granite work top.
Double Burner Gas Outlet.
Imported/RAK/Equivalent Wall & Floor Tiles.
One Stainless Steel Sink with Mixer.
Suitably Located Exhaust Fan.
Concealed Hot & Cold water lines.

ELECTRICAL

Provision for air conditioning in 2 Bedrooms & Living Room.
Good Quality electrical switches & plug points.
Electrical distribution box with main switch.
Best quality (BRB/Supersign/ Paradise/Equivalent) wiring in each apartment.
Electrical point for ironing.
TV cables in Master bedroom and Family Living.
One Internet connection point in suitable location

FEATURES & AMENITIES



FEATURES & AMENITIES

GENERATOR

Deutz/ Perkins (UK)/Equivalent with auto change over switch.

Enough capacity to cover lift, common lights, pumps and 7 lights, 4 fans, 2 socket & 1 calling bell point in each apartment.

LIFT

One 8-passenger capacity

Sigma/Otis/Fuji/Hyundai/ThyssenKrupp Lift.
Fan, Emergency Alarm & Voltage Stabilizer.

INTERCOM

Panasonic or equivalent brand intercom to connect each apartment to the reception desk.

WATER PUMPS

Two units of Pedrollo water pumps (including one standby).

FIRE SAFETY

There will be one universal type of fire Extinguisher in the lobby of each floor.

METERS

Individual electric meter with circuit breakers are secured in a flush-metal panel box for each apartment.
Common electric meter.

ROOF TOP

One cloth drying wire for each apartment.
Designed 4" concrete parapet wall.
Sufficient water outlet with uniform slope.
BBQ Corner and Service Counter.
One common toilet.
Electric points & Fan Point.
Roof Top Garden.

GROUND FLOOR

Reserved car parking for residents with comfortable driveways.
Electric Sub-Station, Generator & Guardroom.
Reception Lobby & Personal mailboxes.
Underground water reservoir of required size.
Secured gate as per design.
Drivers' waiting, Caretaker room, Guardroom, Toilet & Kitchen.

All items mentioned in the above Specifications are based on CHL standard. In case of non-availability of the materials mentioned in this specifications, equivalent materials in terms of quality & price available in the market will be used & CHL reserves the sole discretion to determine the standard of fittings & fixtures. Any requirement/choice beyond the CHL standard items will be considered as Optional Requirement of the buyers.

